



**AL SAFA**  
المصفا لصناعة اثاث المطابخ ش.ذ.م.م.  
KITCHEN CABINETS MANUFACTURING LLC

***PREQUALIFICATION***

---



**AL SAFA**  
المصفاة لصناعة اثاث المطابخ ش.ذ.م.م.  
KITCHEN CABINETS MANUFACTURING LLC

## CONTENTS

- 1) Company Profile
- 2) Founders Profile
- 3) Quality Policy
- 4) Health and Safety Policy
- 5) License & Certificate
- 5) Organization Chart
- 6) Projects Handled
- 7) List and Types of Machines

# COMPANY PROFILE

# ABOUT US



Al Safa Kitchen Cabinets Manufacturing LLC is a UAE based Kitchen Cabinets & wardrobes manufacturing company specializing in the design, production, and installation of high quality kitchen cabinets, wardrobes, vanities, pantries, and other custom joinery works.

Established with a vision to deliver excellence in craftsmanship and service, Al Safa operates with a strong focus on quality, precision, and innovation. Our modern production facility is equipped with advanced European woodworking machinery, enabling us to achieve superior finishing, accuracy, and efficiency across all manufacturing stages.

Our team consists of experienced professionals, skilled technicians, and project managers who work collaboratively to ensure every project is executed to the highest standards meeting both client specifications and international quality benchmarks.



At Al Safa, we are committed to implementing a robust Quality Management System (QMS) that ensures consistency, compliance, and continuous improvement in our products and services. From initial design and material selection to production, delivery, and installation, every process is carefully monitored to guarantee client satisfaction and long term reliability.

Through dedication, technical expertise, and timely project delivery, Al Safa Kitchen Cabinets Manufacturing LLC continues to build a strong reputation as a trusted partner for residential, commercial, and hospitality interior projects across the UAE.

# MISSION & VISION

**Our Mission:** To deliver high quality, customized joinery and kitchen solutions that combine superior craftsmanship, innovative design, and reliable service ensuring total client satisfaction through professionalism, precision, and attention to detail.

**Our Vision:** To be recognized as one of the leading kitchen and joinery manufacturers in the UAE, known for excellence, innovation, and commitment to sustainable, high-standard interior manufacturing practices.

# FOUNDER'S PROFILE

Mr. Yunus, Founder and General Manager of Al Safa Kitchen Cabinets Manufacturing LLC, brings over 25 years of experience in kitchen cabinets, wardrobes, joinery, and interior manufacturing across Qatar and the UAE. His expertise in design, production, and project execution has driven Al Safa's growth into a trusted name known for precision, quality, and client-focused service. Committed to excellence, innovation, and ethics, he continues to inspire the team to uphold the company's values and deliver superior craftsmanship.

# CORE VALUES

## ■ Quality Excellence

We ensure top-quality craftsmanship and continuously improve to exceed client expectations.

## ■ Integrity & Transparency

We operate with honesty, fairness, and accountability to build lasting trust.

## ■ Customer Focus

We prioritize our clients, delivering tailored solutions for their complete satisfaction.

## ■ Innovation & Efficiency

We use modern technology and design to boost productivity, precision, and creativity.

## ■ Sustainability & Responsibility

We practice eco-friendly manufacturing with sustainable materials and minimal waste.



## COMPANY DETAILS

- 1) Name : M/s Al Safa Kitchen Cabinets Manufacturing LLC
- 2) Type of Co. : Limited Liability Company
- 3) Speciality : Kitchen Cabinets/Wardrobes/Timber Doors/Joinery work
- 4) Registered Office : Dubai Industrial City ware house D-17 Phase 2
- 5) Email ID : alsafakitchens@gmail.com
- 6) Contact Person : Mr Yunus +971 505794195 ( Founder)  
: Mr Parvez +971 503833781 ( Operations Head)

# QUALITY MANAGEMENT SYSTEM (QMS) OVERVIEW



## Quality Policy

Al Safa Kitchen Cabinets Manufacturing LLC is committed to delivering high-quality joinery and fit-out works that meet client requirements, applicable standards, and regulatory obligations. Continuous improvement and customer satisfaction are central to our quality objectives.

## Quality Objectives

- Achieve full client satisfaction by meeting project specifications and deadlines.
- Maintain high workmanship standards through skilled labor and supervision.
- Reduce rework and defects by implementing inspection and testing at each stage.
- Promote continuous improvement through regular performance reviews and staff training.

## Quality System Framework

- Our QMS is aligned with the principles of **ISO 9001:2015**.
- Quality control procedures are applied throughout **design, procurement, production, and installation stages**.
- Documentation, traceability, and non-conformance controls are strictly maintained.

## Responsibilities

- **General Manager:** Overall responsibility for implementing and maintaining the QMS.
- **Quality Inspector:** Conducts inspections, monitors compliance, and reports non-conformances.
- **Foremen/Site Supervisors:** Ensure work is executed as per approved drawings and specifications.

## Quality Control Procedures

- Incoming materials are inspected and verified against approved samples and specifications.
- In-process inspections are conducted at key stages of fabrication and installation.
- Final inspection and testing are performed prior to client handover.
- All inspection results are recorded and filed for traceability.

## Non-Conformance & Corrective Action

- Any deviation from approved specifications is recorded through a Non-Conformance Report (NCR).
- Corrective and preventive actions are implemented to eliminate root causes.
- Follow-up inspections verify the effectiveness of corrective measures

# HEALTH, SAFETY & ENVIRONMENT (HSE) POLICY

*Al Safa Kitchen Cabinets Manufacturing LLC is fully committed to maintaining a safe and healthy workplace for all employees, subcontractors, and visitors. Our safety policy is built on the principles of prevention, awareness, and continuous improvement*

## Key Safety Objectives

- Ensure a zero-accident working environment through proper risk assessment and control measures.
- Comply with all UAE Federal, Dubai Municipality, and DDA/DCD regulations on occupational health and safety.
- Promote a strong safety culture where every employee takes responsibility for their own and others' safety.
- Maintain emergency preparedness plans and conduct regular fire drills, first aid, and evacuation training.
- Continuously monitor and improve HSE performance through inspections and audits

## Safety Implementation & Practices

- Regular toolbox talks and safety briefings before work commencement.
- Personal Protective Equipment (PPE) strictly enforced for all workers and visitors on site.
- Risk Assessment & Method Statements (RAMS) prepared before execution of all major activities.
- Safe use and maintenance of machinery and power tools in the workshop and on project sites.
- Proper housekeeping maintained at all times to avoid trip or fire hazards.
- First Aid kits and trained personnel available at all project sites and the manufacturing facility.
- Fire extinguishers and detection systems maintained and inspected regularly

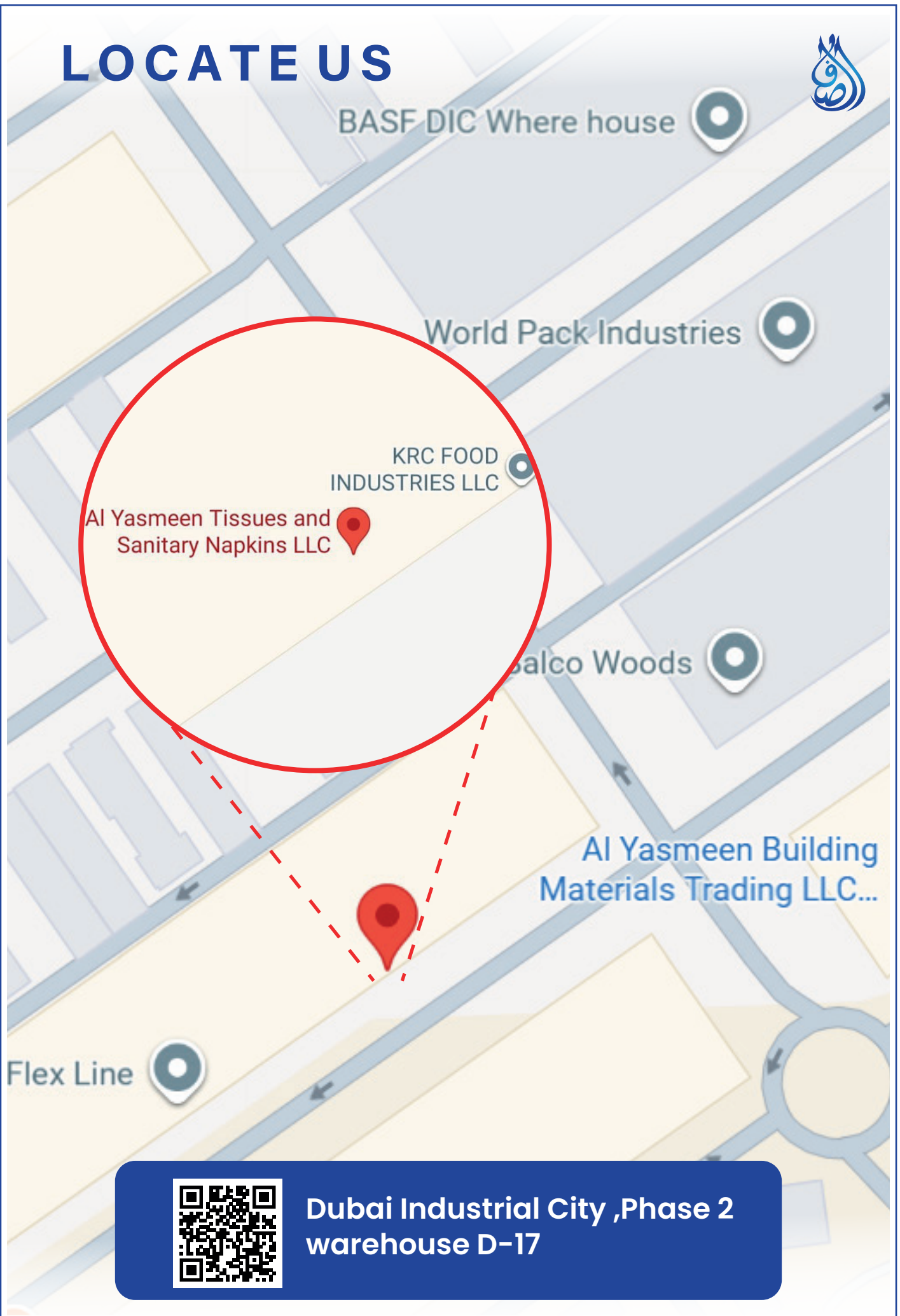
## Training & Awareness

- Conduct regular HSE training for all staff and laborers.
- Continuous awareness campaigns on topics such as manual handling, working at heights, and fire safety.
- Induction training for all new employees before commencing work.

## Safety Monitoring & Reporting

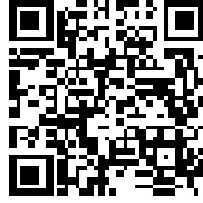
- Appoint a qualified Safety Officer to monitor daily operations.
- Implement incident reporting and investigation procedures to identify root causes and prevent recurrence.
- Maintain HSE records and logs for audits and client reviews.

# LOCATE US



Dubai Industrial City ,Phase 2  
warehouse D-17

# INDUSTRIAL LICENSE



## رخصة صناعية Industrial License

### تفاصيل الرخصة / License Details

رقم الرخصة / License No.	1997371	رقم البلدية / Municipality	المنطقة الصناعية / Industrial Area
اسم الشركة / Company Name	AL SAFA KITCHEN CABINETS MANUFACTURING LLC	السلطة المختصة / Issuing Authority	المنطقة الصناعية / Industrial Area
اسم النشاط / Activity Name	AL SAFA KITCHEN CABINETS MANUFACTURING LLC	السلطة المختصة / Issuing Authority	المنطقة الصناعية / Industrial Area
نوع الرخصة / License Category	Area of Economic Development	السلطة المختصة / Issuing Authority	المنطقة الصناعية / Industrial Area
نوع الشركة / Legal Type	Private Limited Liability Company (Sole Shareholder) (شركة ذات مسؤولية محدودة - مساهمة فردية)	نوع الرخصة / License Category	Area of Economic Development
تاريخ البدء / Issue Date	29/09/2020	نوع الشركة / Legal Type	Private Limited Liability Company (Sole Shareholder) (شركة ذات مسؤولية محدودة - مساهمة فردية)
رقم الترخيص / License No.	1997371	تاريخ البدء / Issue Date	29/09/2020
رقم الترخيص / License No.	1997371	رقم الترخيص / License No.	1997371
رقم الترخيص / License No.	1997371	رقم الترخيص / License No.	1997371

### الاطراف / License Members

رقم العضو / No.	اسم العضو / Name	جنسية / Nationality	المنصب / Role	النسبة المئوية / Share
1908723	محمد باقر محمد محمد كور MOHAMMED FARVEZ ALJAH MOHAMMUD SEHR	الهند / India	مالك / Share Owner	100.00%
1908723	محمد باقر محمد محمد كور MOHAMMED FARVEZ ALJAH MOHAMMUD SEHR	الهند / India	مدير / Manager	

### أنشطة الرخصة / License Activities

النشاط / Activity	الحالة / Status	الوصف / Description
Wooden Doors & Windows Manufacturing	Active	صناعة الابواب والنوافذ الخشبية
Kitchen Furniture Manufacturing	Active	صناعة أثاث المطابخ
Home Furniture Manufacturing	Active	صناعة أثاث المنزل
Office Furniture Manufacturing	Active	صناعة أثاث المكتب

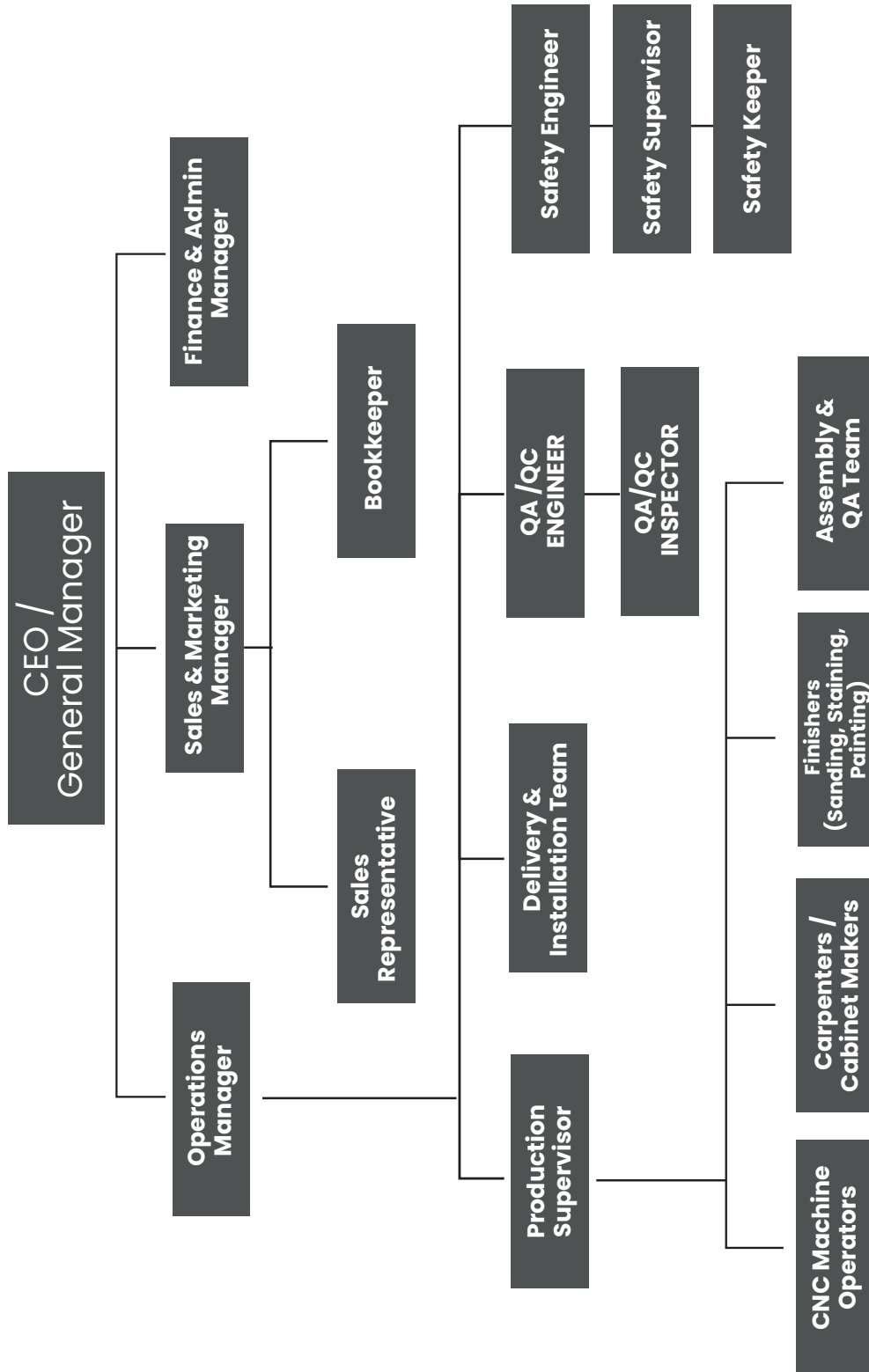
نحن نقدم خدماتنا المهنية في جميع أنحاء الإمارات العربية المتحدة، ونسعى جاهداً لتقديم أفضل خدمة عملاء ممكنة.

نحن نقدم خدماتنا المهنية في جميع أنحاء الإمارات العربية المتحدة، ونسعى جاهداً لتقديم أفضل خدمة عملاء ممكنة.

نحن نقدم خدماتنا المهنية في جميع أنحاء الإمارات العربية المتحدة، ونسعى جاهداً لتقديم أفضل خدمة عملاء ممكنة.

1997371

# ORGANISATION STRUCTURE

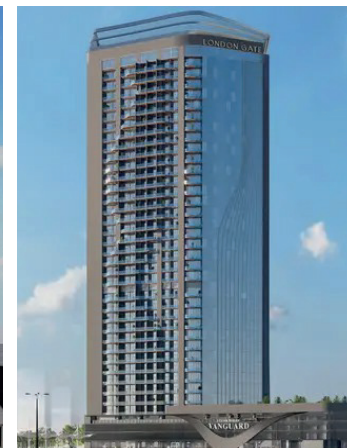


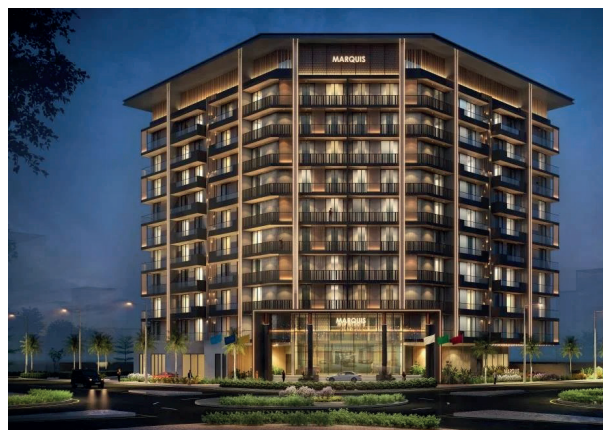
# LIST OF PROJECTS HANDLED IN DUBAI

PROJECT NAME	CONTRACTOR / CONSULTANT / CLIENT	SCOPE OF WORKS
AL ZAHIA	UNEC/MAJID ALFUTTAIM	Kitchen Cabinets & wardrobes
GOLDEN FIVE	MYK GLOBAL LIMITED	Kitchen Cabinets & wardrobes
LUMA BY TOWN X	POE CONSULTANTS	Kitchen Cabinets ,wardrobes, vanities, pantry
LUMA PARK VIEW	POE CONSULTANTS	Kitchen Cabinets ,wardrobes, vanities, pantry
YAS ACERES	AECOM	Kitchen Cabinets ,wardrobes, vanities, pantry
YAS ISLAND	AECOM	Kitchen Cabinets ,wardrobes, vanities, pantry,cladding
SENTRO REALITY LIMITED	EM SQUARE	Kitchen Cabinets & wardrobes
VICINTORE	VICINTORE	Supply and Installation of kitchwardrobes, laundries and db units
GROVY	BEL-YOHAH	Supply and Installation of Kitchen Cabinets & wardrobes,laundries
IMAN GROOVE	IMAN DEVELOPERS	Supply and Installation of Kitchen Cabinets & wardrobes,laundries
MARQUIS GALLERIA	CJ TECH CONTRACTING	Supply and Installation of Kitchen Cabinets
HEILBRONN	EMSQUARE	Supply and Installation of Kitchen Cabinets & wardrobes,laundries
BAY RESIDENCE	RAK PROPERTIES	Supply and Installation of Kitchen Cabinets & wardrobes,vanities
MAG 22	MAG GROUP	Supply and Installation of Kitchen Cabinets & wardrobes,vanities
MAG 6 VILLAS	MAG GROUP	Supply and Installation of Kitchen Cabinets & wardrobes,vanities
30 TOWN HOUSES JVC	FEDERAL ENGG CONSULTANTS	Supply and Installation of Kitchen Cabinets, wardrobes,vanities,laundries,clading works
DUBAI EURO G+4	AL AJMI ENGR CONULTANTS	Supply and Installation of Kitchen Cabinets & wardrobes,vanities
ALICANTE DUBAI SPORTS CITY	BUSET CONTRACTING	Supply and Installation of Kitchen Cabinets & wardrobes,vanities
ESTELLA DUBAI SPORTS CITY	BUSET CONTRACTING	Supply and Installation of Kitchen Cabinets & wardrobes,vanities

PROJECT NAME	CONTRACTOR / CONSULTANT / CLIENT	SCOPE OF WORKS
AL AMALEK (ARIF)	MEYDAN DEVELOPERS	Supply and Installation of Kitchen Cabinets & wardrobes, vanities
AMWAJ	EDMAC ENGINEERING CONSULTANT	Supply and Installation of Kitchen Cabinets, wardrobes
PG ONE	EDMAC ENGINEERING CONSULTANT	Supply and Installation of Kitchen Cabinets, wardrobes, vanities
MASSAR 256 VILLAS	PIVOT ENGINEERING AND GENERAL CONTRACTING	Supply and Installation of Kitchen Cabinets, wardrobes & vanities
METAC MUDON 400 VILLAS	METAC GENERAL CONTRACTING	Supply and Installation of wardrobes & vanities
JIHAD HABIB	PRO LINE ENGINEERING CONSULTANTS	Supply and Installation of Kitchen Cabinets, wardrobes & vanities
NAD CONTRACTING	MARSAM ARCHITECTS	Supply and Installation of Kitchen Cabinets, wardrobes & vanities
LONDON GATE	NATIONAL ENGINEERING BUREAU	Supply and Installation of Kitchen Cabinets, wardrobes
TAG ALAYA 409 VILLAS (ONGOING)	UNEC/MAJID ALFUTTAIM	Supply and Installation of italian Kitchen Cabinets, wardrobes, pantries, vanities & all kinds of joinery

# PROJECTS IN DUBAI



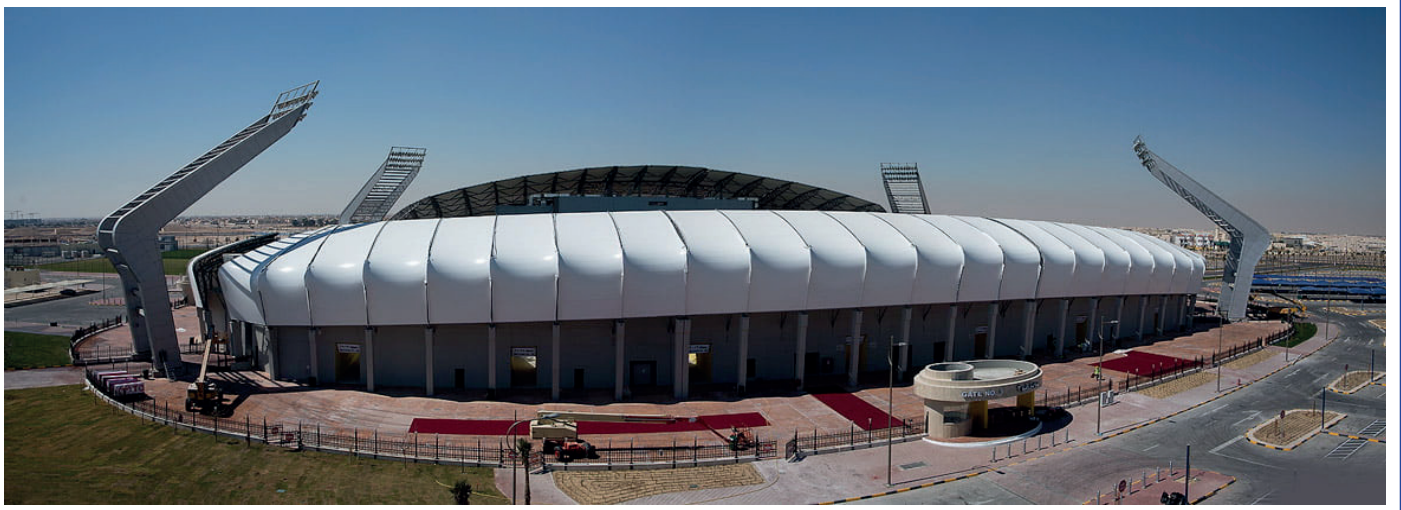


# LIST OF PROJECT INVOLVED/COMPLETED IN QATAR

PROJECT NAME	CONTRACTOR / CONSULTANT / CLIENT	SCOPE OF WORKS
DOHA OASIS	REDCO / AECOM / HALUL REAL ESTATE	Wooden doors, Wardrobes, Kitchen Cabinets, Appliances, Vanity, Wall Cladding & Ceiling Cladding, Pantry etc.
PARAMOUNT HOTEL RESIDENCES AT PEARL QATAR PORTO ARABIA 7B.	CRC /GHD CONSULTANT / AL ASMAKH.	Wooden doors, Wardrobes, Kitchen Cabinets, Appliances, Vanity, Wall Cladding, Lockers, Skirting, Ceiling etc.
ABRAJ QUARTIER (AQ-3 TO AQ-6)	SHAPOORJI / KERNEL / AL SHAREEF ENTERPRISES	Wooden doors, Wall Cladding, Column Cladding, Kitchen Partitions, Gym area Mirrors, Loose Furniture etc.
LE MIRAGE CITYWALK (400 APTS) & DOWNTOWN (170 APTS)	REDCO / AEB / LEMIRAGE REAL ESTATE	Doors, Vanity, Wardrobes, Appliances, Kitchen, Wall & Ceiling Cladding, Skirting, Flooring, Gym area mirrors etc.
QATAR UNIVERSITY	SEG QATAR/ QDC	Supply and Installation of wooden doors (UL 10c, BS 476 and FSC Certified Fire Doors & Non-Fire doors) - FSC & LEED Project
DOHA CONVENTION CENTER AND TOWER BP-02B	SIX CONSTRUCT-MIDMAC JV/ HYDER CONSULTING	Supply and Installation of Architectural Wood Works, Wooden doors & Finish Carpentry to Special Interiors
RENOVATION OF KHALIFA STADIUM	MIDMAC-SIX CONSTRUCT JV/ DAR AL-HANDASAH	Supply and Installation of Wooden doors & Joinery Works which includes wooden doors (Fire Doors BS 476 & UL10c, Acoustic doors & Non-Fire Doors) wall cladding, cabinets, counters, skirting & wooden flooring - GSAS Project
RENOVATION OF CITY CENTER SHOPPING MALL	DERWIND / GHD	Supply and Installation of Wooden doors (FR & NFR), Vanity Mirrors, Wooden Partitions, Seating, Wall Cladding and Joinery Works
B+G+10 OFFICE TOWER AT AL SALATA PROJECT & DOUBLE TREE HOTEL AL SADD PROJECT	DERWIND /DIWAN AL EMARA	Supply and Installation of Carpentry and Joinery Works which includes Timber Doors (Fire Rated & Non-Fire Rated) and Joinery Works (Console, Cupboards, Niches, Pool Counter, Wall Cladding etc.
T J PEARL QATAR- DANA ISLAND & HGH SURGERY DEPT. EXPANSION	MIDMAC/KEO	Supply and Installation of Timber Doors (Fire Rated & Non-Fire Rated)
GEORGETOWN UNIVERSITY AT QATAR FOUNDATION	MIDMAC CONTRACTING CO. / KEO	Fit Out Works for UCL - Supply and Installation of carpentry, Joinery and Mill works which includes wooden doors (UL10c FD & NFD), skirting, shelving & cabinets, cladding & trellis etc.
QATAR GABBRO TERMINAL EXPANSION PROJECT (QGT)	SIX CONSTRUCT	Supply and Installation of Wooden doors (FR & NFR), Kitchen Cabinets and counter tops etc.
NAJMA HOTEL APARTMENTS.	ARTELOGNO	Supply and Installation of Wooden Doors (FD & NFD), Wardrobes, Doors, Counters, Ceiling, Wall Claddings
NDIA CP10	QIT-IMAR/ALEC JV	Supply and Installation of Wooden Doors & Millwork
BARWA CITY & COMMERCIAL AVENUE	SHAPOORJI PALLONJI QATAR	Manufacture, Supply, Delivery, Install, Snagging, De Snagging & DLP Warranty of Wardrobes, Wooden Doors (FD & NFD) and Kitchen Cabinets.
QATAR ARMED FORCES	BELLE HARVEY INTERIORS / GHD	Supply and Installation of Wooden Doors (FD & NFD), DB Cabinets & Skirting.
HEART OF DOHA(MUSHEREIB CITY)	HYUNDAI ENGINEERING	Supply of Wooden Doors (UL 10c, BS 476 and FSC Certified Fire Doors & Non-Fire doors) - FSC & LEED Project
GRAND MAJLIS	WAW/CDC/AEB	Painting and Installation of various finishes of joinery works.

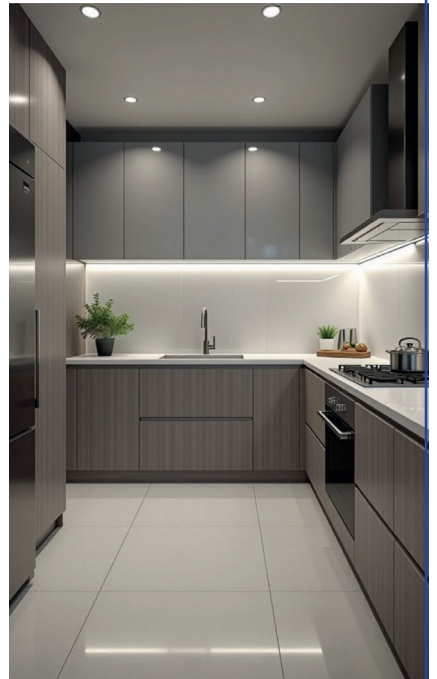
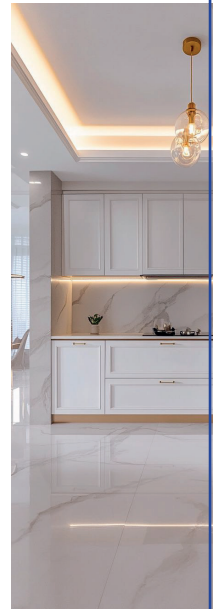
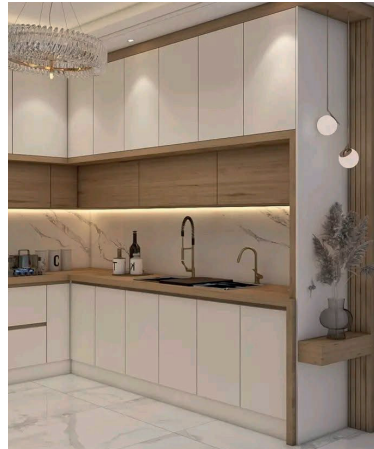
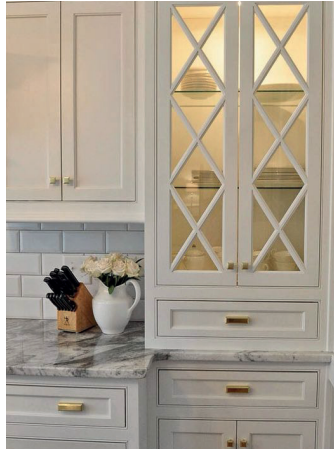
# PROJECTS IN QATAR

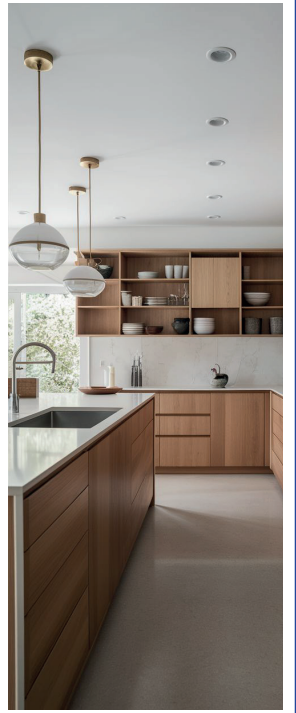




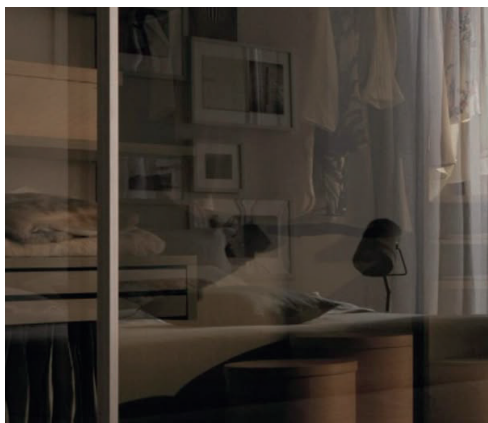
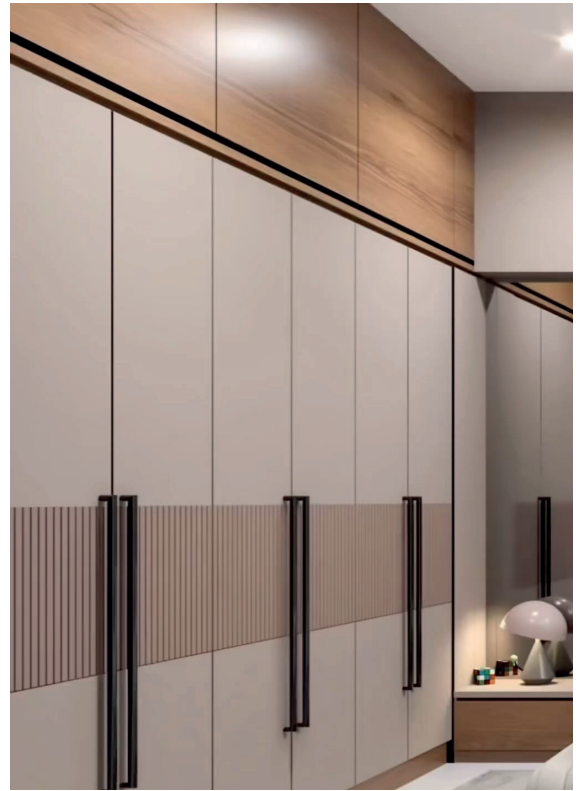
# SELECTED PROJECTS

## KITCHEN INTERIORS





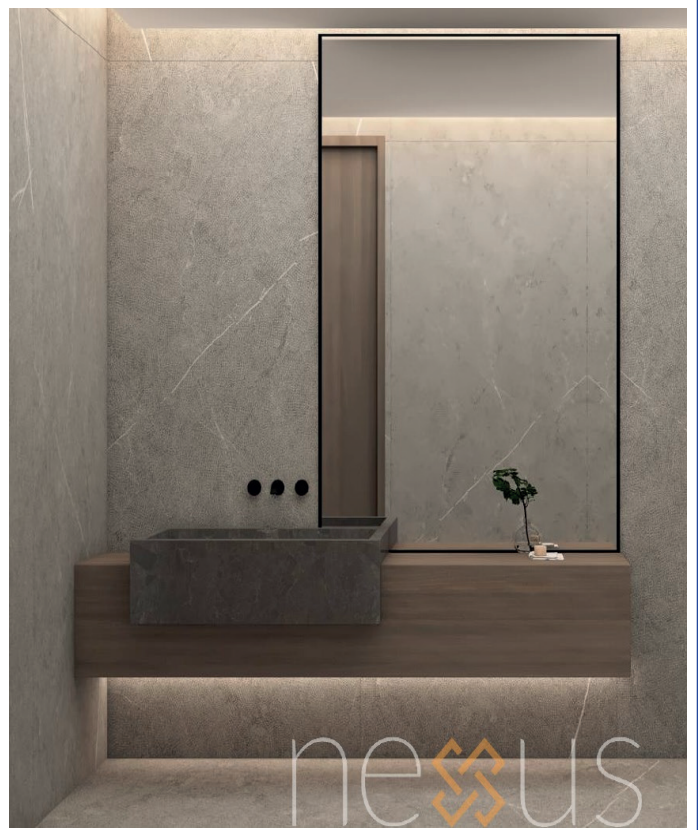
# WARDROBES PHOTOS



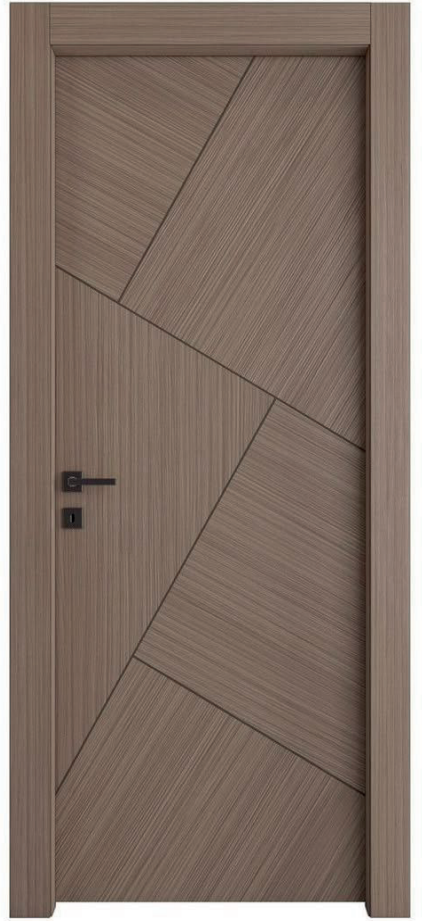
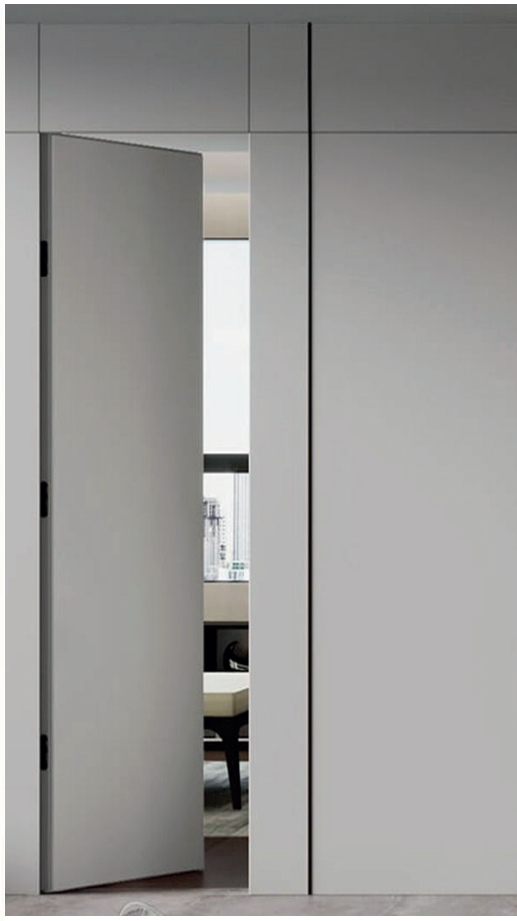
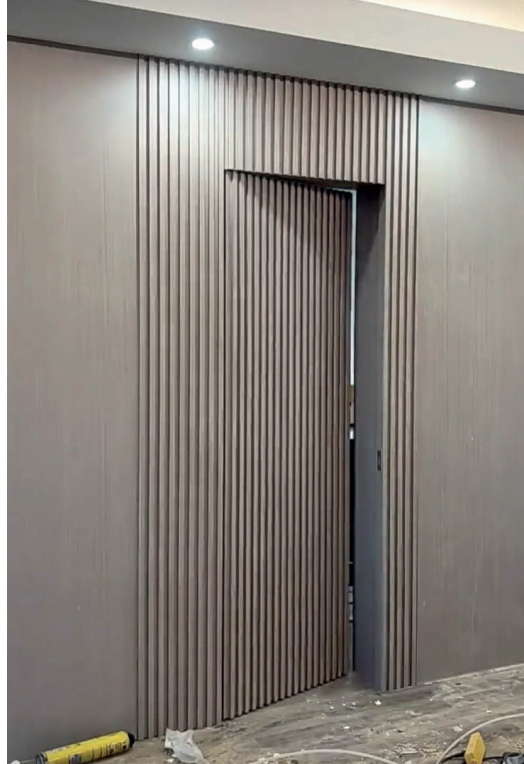


# VANITY PHOTOS

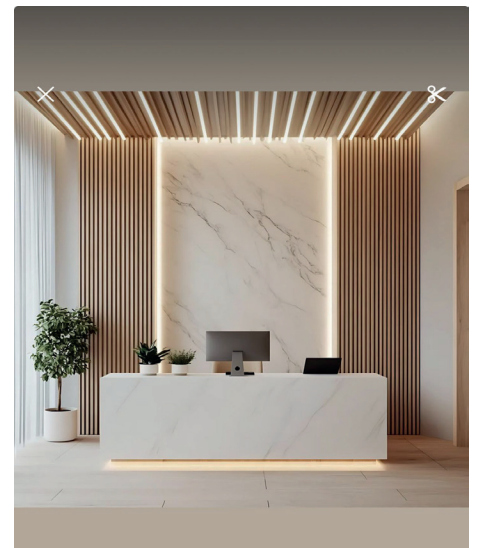
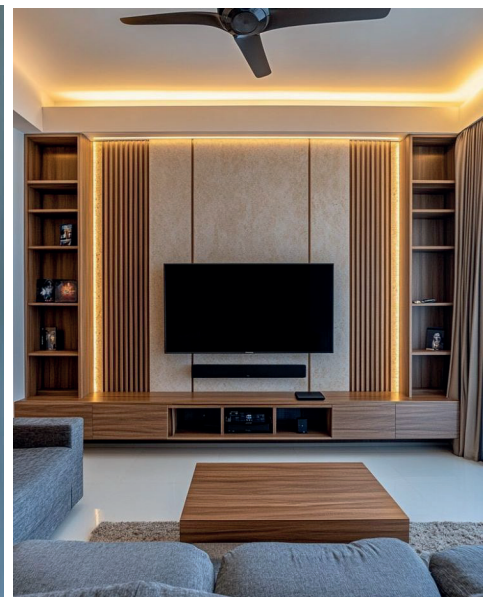




## INTERNAL DOORS DESIGN

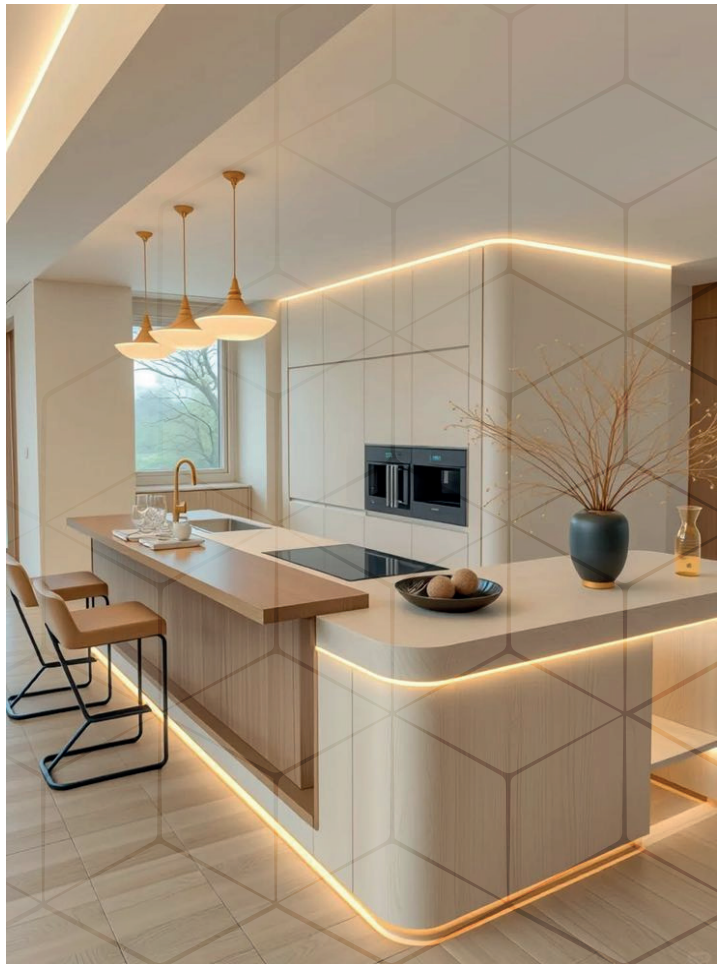


# TV CLADDING PIC

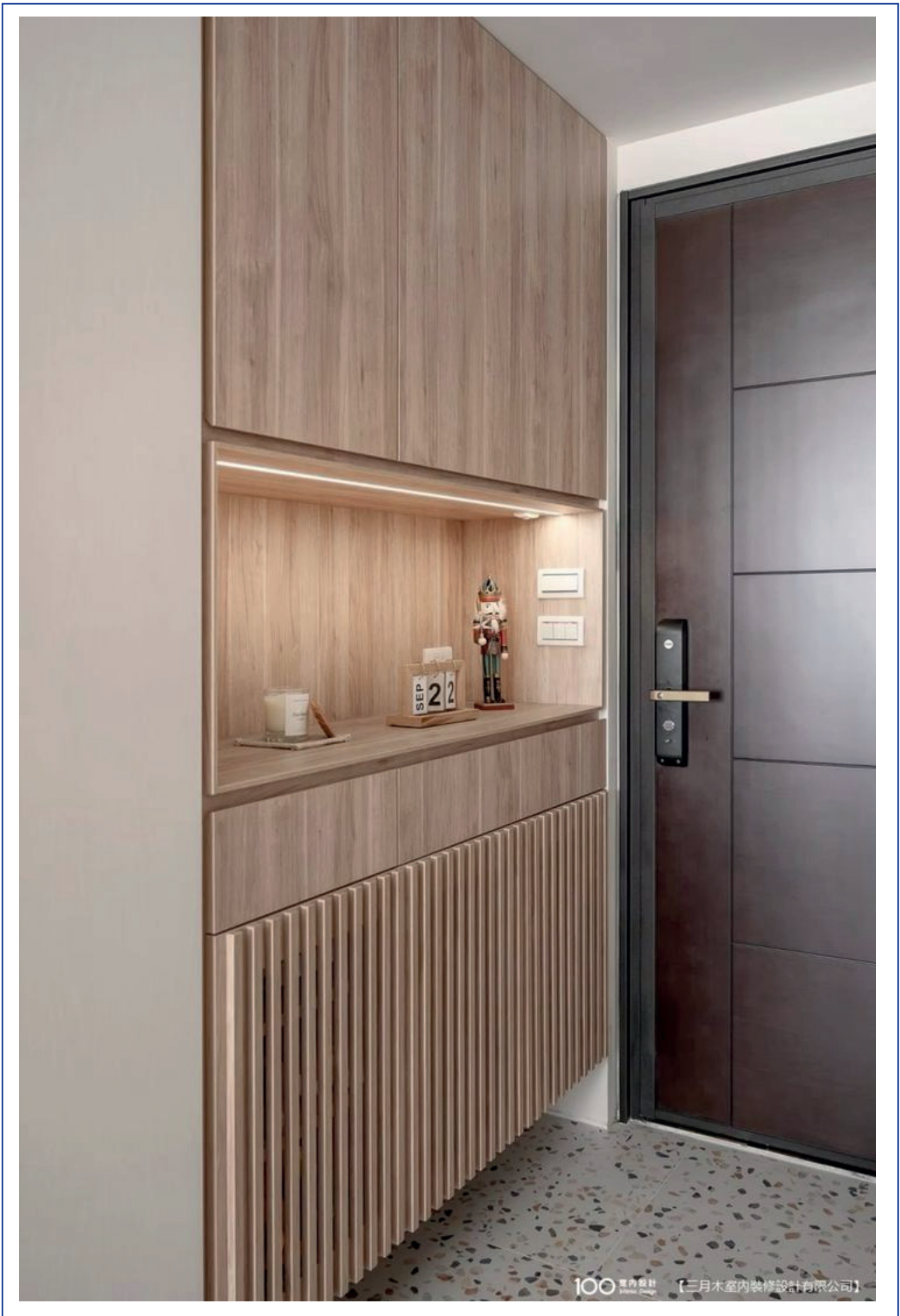




# PANTRY PHOTOS







## LIST OF MACHINES

Sl no	Name of Plant & Machinery	Brand	No of Units
1	EDGE BENDING MACHINE	KDT( MASTER WOOD ITALY) KS-399	1
2	NC BORING MACHINE	KDT( MASTER WOOD ITALY) KD-KS612KHSZ	1
3	BEAM SAW MACHINE	KDT( MASTER WOOD ITALY) KS 843-D	1
4	PANEL SAW MACHINE	KDT( MASTER WOOD ITALY) KS-138	1
5	SCREW AIR COMPRESSOR	KDT 30 HP	1
6	DUST COLLECTORS	KDT	4
7	AIR DRYER	KDT	1
8	AIR TANK	KDT 1000 Litre	1
9	AIR FILTER		1
10	HOT PRESSING MACHINE	SCM	1
11	SURFACE PLANER	SCM	1
12	THICKNESSER	SCM	1
13	PRESURIZED CORAL SPRAY BOOTH	GMECH 4000*7000*3600mm ( L*W*H)	1
14	PRESURIZED FLASH OOF ROOM	GMECH 7000*8000*3000mm ( L*W*H)	1



## (MASTER WOOD-ITALY) KDT P.R.C FACTORY BEAM SAW MACHINE

### Functions

*High quality NC beam saw which can be used in precise cutting for wood board and other material sheets. Easy to work with optimization software to achieve high material usage and cutting efficiency.*

### Highlights

- The main saw is controlled by servo motor, grooving is available, the main saw and scoring saw apply an independent control system in the lifting. Automatically adjust the lifting height by the cutting thickness, to realize a better sawing effect.
- Main frame is designed with a heavy-duty structure, and processed with gantry CNC, to achieve accuracy to international standard.
- The lifting of pressing beam is pneumatic controlled by high precised cylinder with duplicated rod, to realize the function of auto position when working. Rising distance could be adjusted according to the panels thickness, so as to reduce the non-duty movement and improve the cutting efficiency.
- Saw carriage is driven by servo motor and gear-rack, stable and speedy in running. The auto locating could be realized by the sawing width, so as to reduce the time in free running and improve the working efficiency. The maximum sawing speed is up to 95m/min and returning speed can reach 120m/min.
- Gripper is controlled by high precised reducer and gear-rack, cutting precision is up to  $\pm 0.1\text{mm}$  ; Rubber-wrapped Finger structure effectively prevents the panel from scratching. Working table is applied with pneumatic floating balls on top, effectively protect working panel
- being scratched, and easy to move the panels to the working area.  
Gripper amount: 12
- based on the PC controlling system, it has a complete operation instruction and
- troubleshooting guideline, and could be linkup with various software.



## KDT (MASTER WOOD-ITALY) P.R.C FACTORY NC BORING MACHINE

### Functions

*Double-drill package ,six sides NC drilling center has double-drill packages and 5 types ATC for simultaneous processing and more efficiency. Single-handed operation, small workload, can be directly connected with a variety of split software. It is mainly used for six faces (hinge holes, through holes, semi-through holes) of various kinds of artificial boards, horizontal drilling, and can simultaneously process symmetrical hole positions, also can do hogging and milling with small spindles.*

### Highlights

- 5 types ATC for spindle, easier handle hogging, milling, lamella and other craft;
- With double gripper and long guide rail, gripper max speed up to 140m/min, auto detect hole position to avoid gripper exchange time. Gripper trip up to 5.5 meter, big board can working by one time catch, reduce processing time.
- Adopt double translation air flotation table, move flexibly according to the hole position to improve the drilling accuracy and avoid fouling at the bottom.
- Adopt double positioning mode, more accurate and efficient positioning of different panels.
- Adopt belt conveyer dust collection, centralized remove all dust which fall into machine.
- Software can simulate processing path, predict the processing time;
- Processing record statistics, view production progress in real time.



## KDT (MASTER WOOD-ITALY) P.R.C FACTORY EDGE BANDING MACHINE

### Functions

*This is a preferred choice for bevel and straight edge banding, which includes straight edge pre-milling + bevel edge pre-milling + edge tape grooving + straight/bevel end gluing + straight/bevel end pressing + end cutting + rough trimming + bevel edge fine trimming + straight edge fine trimming + straight edge corner rounding + bevel edge scraping + bevel edge scraping + flat scraping + bevel edge buffing + straight edge buffing.*

### Highlights

- Quick and efficient switching between beveled and straight edge banding, increasing machine utilization.
- Equipped with high-quality components from well-known brands, which ensures high reliability, strong anti-interference capability, and reduces the failure rate.
- Equipped with a set of straight and beveled milling cutters that reduce edge breaking during milling of the board.
- The hot air blowing device heats the workpieces before pressing the straight edges to ensure the bonding strength between the edge banding strip and the workpieces.
- Double glue-pressing unit, independently configured for beveled and straight edge glue coating and pressing to facilitate adjustment and ensure a tight fit of the edge banding strip.
- Equipped with an automatic lubrication system for the trimming unit to ensure smooth operation and improve the service life of the parts.
- Configured with a flat scraping unit and double buffing unit to scrape off excess glue lines and polish the edge banding strip..
- Corner rounding unit: achieves multiple types of edge trimming processes.
- Steel-made top pressure beam with V-belt ensures stable feeding



## KDT KS-138 PANEL SAW MACHINE

### Specifications

- Sliding table length: 3,800 mm (KS-138K variant)
- Maximum cutting length: 3,720 mm
- Main saw blade diameter: Ø300 mm standard; optional Ø350 mm
- Vertical cutting height at 90°: 80 mm (option 100 mm)
- Vertical cutting height at 45° tilt: 60 mm (option 75 mm)
- Blade tilt capability: 0°–45°
- Main saw motor power: 5.5 kW (≈7.5 HP)
- Scoring saw blade diameter: 120 mm
- Main saw rotational speed: 4,000 / 5,000 rpm
- Machine weight: 1,000 – 1,100 kg (varies by model)
- Max cutting width / rip fence stroke: 1,250 mm
- Suction ports / vacuum hood: Lower suction inlet Ø100 mm + upper protection Ø80 mm

### Features & Highlights

- Electronic fence positioning with touch-screen control of blade height and tilt (KS-138K).
- Servo-driven ball screw rip fence for high precision and repeatability.
- Heavy-duty steel frame construction for long-term durability and vibration-free operation.
- Aluminium multi-cell sliding table for smooth and accurate movement.
- Saw shaft electronically balanced for stable and quiet cutting performance.
- Centralised lubrication system for smooth guide operation and reduced maintenance.
- Micro-switches for blade access and speed adjustment safety.
- Large sliding table (up to 3,200×430 mm) suitable for handling big panels.
- Supports 0°–45° tilt cutting for flexible panel processing applications.
- Optional scoring unit for chip-free cutting of laminated boards.

# HOT PRESSING MACHINE



# SURFACE PLANER



# THICKNESSER



# SCREW AIR COMPRESSOR



# PRESSURIZED SPRAY PAINT BOOTH



## 1. PRESSURIZED TOPCOAT SPRAY BOOTH

Pressure controlled closed environment, uses to paint furniture and vehicles in workshops. To ensure the ideal working condition like temperature air flow and humidity. These environments are equipped with one or more groups of ventilation, motors and to assist in the removal of the over sprayed paint from the air and provides efficient operation.

This type of painting booth is suitable for suctioning and demolishing the pigments and fumes emitted from paint spray made with synthetic solvents. The removal of the pigments and fumes occurs with a suctioning wall of cardboard inertial "Paint –Stop" filters drawers. The painting booth is built with modular panel of galvanized press folded sheet iron.

## **PRESSURISED SPARY PAINT BOOTH – 1**

### TECHNICAL INFORMATIONS

#### Spraying booth Side suction -1 Nos

- Size of the booth=4000x1100x2330 mm
- Suction wall size:4000x1800mm
- Strong Inertial Paper Filter layer: 900x4000mm-2Nos- Made in France
- Room Size: 4500mmx7000mmx3600mm (LxWxH)
- Working Space: 4400mmX6200mmx3000mm (LxWxH)
- Structure in PU Insulated GI wall panel 50 mm thick
- Sliding door 2000x2400 mm-1 Nos

Suction blower : Anti sparking exitcution centrifugal blower

Capacity of the Blower (m3/hr):

12000-14000m3/hrX1-Motor:1X4 KW, 3P ,400V, 50Hz x1No is

#### AIR HANDLING UNIT WITH 2 STAGE FILTRATION FOR FRESH AIR

- Total suction Capacity of the Blower (m3/hr): 30,000 m3/hrx1No's-
- Motor :7.5KWx1No's, 3P,400V AC,50Hz made in Spain
- Filtering Surface :1-meter X 1 meter
- Filter : Synthetic filter-
- Rack with removable filter rack: 1300x4500mm (LxW) -2 No's
- Removable filter rack with filter-1300x1000mm- 10No's
- F500G – Top filter

#### 3STAGE FILTRATION - PREFILTER+POCKET FILTER + CEILING FILTER



## 2.PRESSURIZED FLASH OFF ROOM -1 NOS

Pressure controlled closed Environment Specifically designed for Drying painted Product without getting any kind of External contact with over sprayed paint or Dust which will spoil the Quality and the Finishing of the Products.

Presence of 1Nos of Fresh air Unit with 7.5kw Blower for Fresh air inlet & 2 No of Solvent suction Hood with 1.1kw each will make the Room pressurized.



### **PRESSURIZED FLASH OFF ROOM**

Room Size: 8000mmx7000mmx3600 mm (LxWxH)

Working space : 7900x6900x3000 mm lxwxh

### **TECHNICAL INFORMATIONS**

#### **Solvent Suction Fan**

- suction Capacity (m3/hr.): 4000 m3/hr x 2 No
- Motor :1.1 KW x 2 No is made in Italy
- Suction Conical Hood with Grill -700x700x3000mm-2 No

#### **AIR HANDLING UNIT**

- Total suction Capacity (m3/hr.): 21000 m3/hr. X1 no's
- Motor :7.5KW X1 No, made in Spain
- Filtering Surface :1-meter X 1 meter
- Filter : synthetic filter
- Plenum Rack with removable filter rack: 1 No-6000X1500mm
- Removable filter rack with filter-7 No's
- F-500 Roof Filter
- Two layer of filtration :- 1st layer prefilter, 2nd layer pocket filter





**AL SAFA**

الصفا لصناعة اثاث المطابخ ش.ذ.م.م  
KITCHEN CABINETS MANUFACTURING LLC

**THANK  
YOU**

**AL SAFA KITCHEN CABINETS MANUFACTURING LLC**

☎ 0505794195 / 0503833781

✉ alsafakitchens@gmail.com

📍 Dubai Industrial City ,Phase 2 ,warehouse D-17